



# Highlights

tropicana.com

JAN-FEB 2021



# GONG XI FA CAI

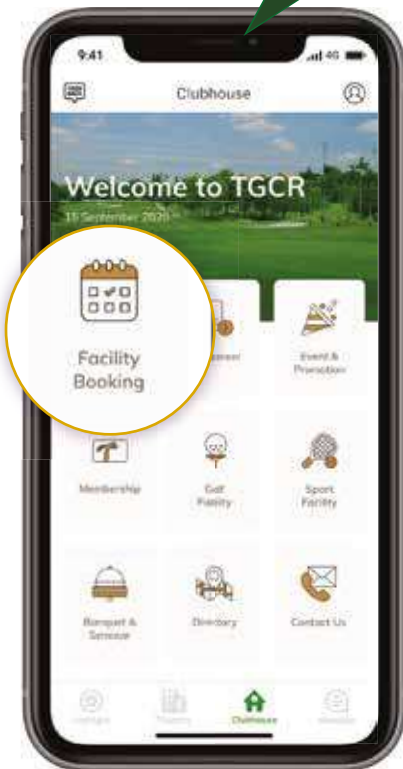
#StaySafe  
#KitaJagaKita



# CONVENIENCE AT YOUR FINGERTIPS



## PERKS & SERVICES



**EXCITING  
PROMOTIONS**

**PROMOTIONS  
& UPCOMING EVENTS**

**QUICK ACCOUNT  
STATEMENT CHECK**

**ATTRACTIVE  
FUNCTION SPACE  
DETAILS**

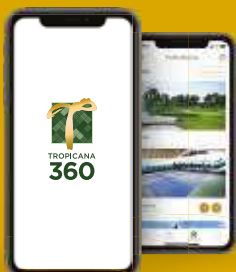
**32°C**  
WEATHER FORECAST WITH  
REAL TIME UPDATE

**GOLF & SPORTS BOOKING**

**AVAILABLE  
OUTLETS  
DIRECTORY**

**DAILY BOOKINGS  
AVAILABLE NOW**

**For feedback and enquiries:  
gm@tropicana.com**



**Discover Tropicana 360**  
Scan to download



# FACILITY BOOKING USER GUIDE

There is an easier way to make bookings now!  
Download the app and start using it starting

## Golf Facility Booking



**Step 1**

Tap to open **Facility Booking**



**Step 2**

Tap **Golf**



**Step 3**

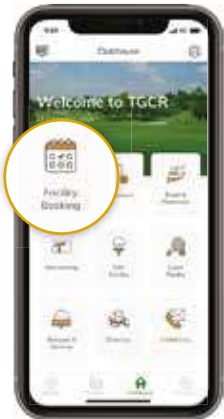
Select your preferred **Details** and tap **Book**



**Step 4**

Tap **My Booking** to check your booking

## Sport Facility Booking



**Step 1**

Tap to open **Facility Booking**



**Step 2**

Select **Preferred Sport**



**Step 3**

Select your preferred **Details** and tap **Book**



**Step 4**

Tap **My Booking** to check your booking



Discover  
**Tropicana 360**  
Scan to download

For feedback and enquiries:  
[gm@tropicana.com](mailto:gm@tropicana.com)





**TOP 3**

**BEST CORPORATE  
TOURNAMENT VENUE**

**BEST GREENS  
BEST CLUBHOUSE  
BEST F&B GOLFER'S TERRACE  
BEST F&B HALFWAY HUT**

TGCR would like to give a warm thank you to our members, guests, clients, voters & ParGolf Magazine. It is an honour to be recognized and awarded 'Best Corporate Tournament Venue', in addition to the other awards. We will continue to work hard in making Tropicana Golf & Country Resort a golfer's paradise.

*Winning doesn't always mean being first. Winning means you're doing better than you've ever done before.*

**GOLF**

- 9 PRO TIPS WITH SIVA
- 10 ORDER OF MERIT: WHAT & WHY
- 13 COVID-19 ADVISORY: THE NEW NORM

**EVENTFUL**

- 6 DEEPAVALI WITH A DIFFERENCE
- 6 TROPICAL MURAL
- 12 CHRISTMAS CHEER
- 16 FITTING FEAST ON NEW YEAR'S EVE



**FOODIES**

- 8 CHINESE NEW YEAR PROMOTIONS
- 20-21 JANUARY & FEBRUARY PROMOTIONS

**DIRECTORY**

- 22-23 CLUB DIRECTORY & LISTING
- 24 AFFILIATION LIST
- 25 RECIPROCAL LIST

Keep updated by following our social media at :-

-  Tropicana Golf & Country Resort
-  tropicanagolf

**MANAGEMENT TEAM**

Senior General Manager  
**ALLAN WONG** ext 101

Deputy General Manager  
**V. RAVINDRAN** ext 530

Deputy General Manager, Finance  
**CHONG SOOK YEEN** ext 113

Deputy General Manager, Operations  
**ALMIRAN BIN ANUAR** ext 530

Senior Manager, Operations  
**DAVID WANG** ext 162

Senior Manager, Security  
**ISMAIL SALEH** ext 314

Senior Manager, Food & Beverage  
**ABD RAZAK OMAR** ext 103

Manager, Events & Promotion  
**DINO LASZIDIN** ext 529

Executive Chef  
**ZAIHARI ZAINOL** ext 326

Assistant Manager, Golf Operations  
**MAREN** ext 204

**CONTACT**

**GENERAL INQUIRIES**  
03 7804 8888  
gm@tropicanagolf.com

**MEMBERSHIP & MARKETING DEPARTMENT**

**FUNCTIONS, SEMINARS & BANQUET DEPARTMENT**  
Toll Free 1800 88 8128  
salesmarketing@tropicanacorp.com.my

**GOLF DEPARTMENT**  
03 7804 1531  
golf@tropicanacorp.com.my

**SPORTS DEPARTMENT**  
03 7804 8888 ext 218 / 220 / 281  
sports@tropicanacorp.com.my

**F&B DEPARTMENT**  
03 7804 8888 ext 102 / 103  
fmb@tropicanacorp.com.my

**CREDIT CONTROL DEPARTMENT**  
03 7804 8888 ext 144 / 148 / 152 / 503  
creditcontrol@tropicanacorp.com.my

**EVENTS & PROMOTIONS DEPARTMENT**  
03 7804 8888 ext 529 / 531 / 533  
events@tropicanacorp.com.my

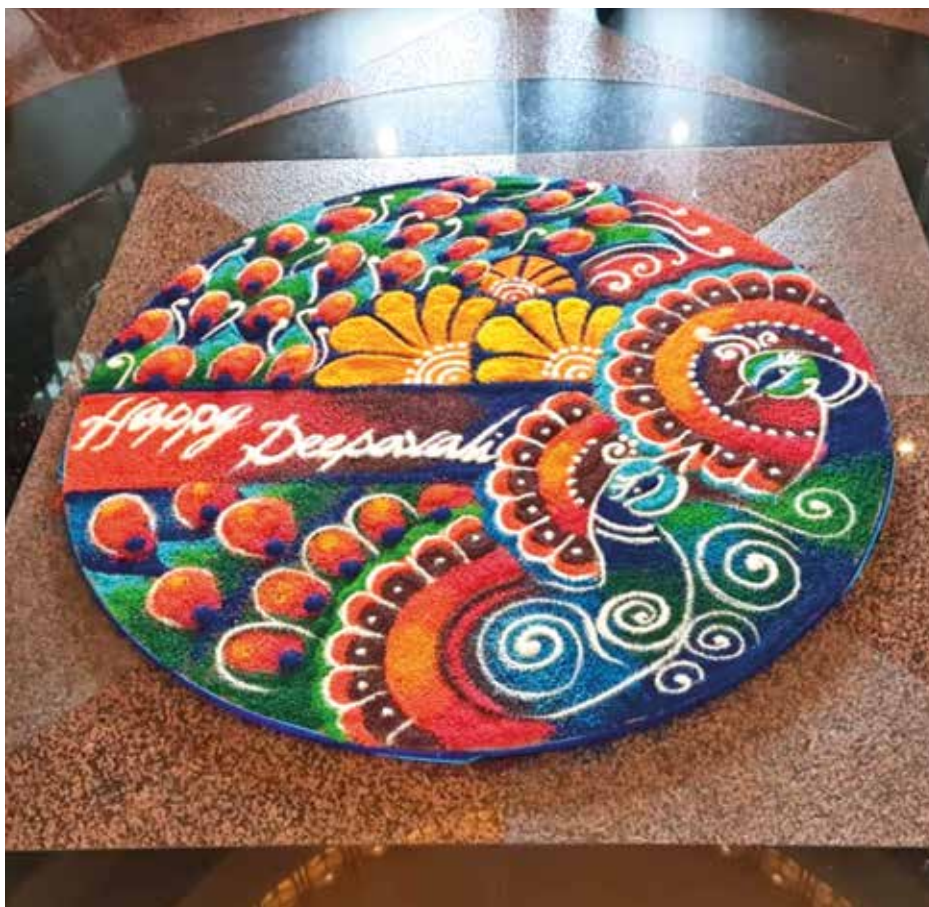
www.tropicanagolf.com

### Deepavali With A Difference

The colourful *Kolam* is indeed one of the most vivid features of the *Deepavali* celebration.

Also known as the *Rangoli* or *Muggu*, the *Kolam* is an intricate floor decoration using coloured rice flour, chalk or flowers, done at home, in temples and now even work places during *Deepavali* and certain other Hindu festivals or events such as weddings.

While the on-going CMCO and our safety/health SOPs prevented a big celebration, the club had a beautiful *Kolam* created in the main lobby on November 11 to honour all Hindu members and guests.



### Showcasing Local Talent

TGCR is constantly looking at ways to further enhance members and guests' club experience, and not just in terms of facilities and quality of service. In the interest of adding a splash of vibrancy and colour to elevate the overall feel and ambiance at the Sports Wing, TGCR recently got famous local artist Suhaimi Ali to paint a custom wall mural along its walkway.

The Terengganu native, also known as Mieyali, shot to fame after creating a mural in Shah Alam in July, consisting of prominent Malaysian leaders in recognition of their tireless efforts in keeping the country safe during the Covid-19 pandemic. Since then Suhaimi's talents have been the talk of the town – and beyond, gaining fame in neighbouring countries as well.

TGCR is proud to support local artists such as Suhaimi, and especially delighted at the final artwork, so don't forget to check it out when you swing by the club next!



Follow the artist!

 [Suhaimi Ali \(MieyAli\)](#)

 [miey\\_ali](#)



# 2021

YEAR OF  
THE OX



HERE'S HOPING TO MAKE THE BEST OF 2021



# CELEBRATE CHINESE NEW YEAR 2021

Follow our promotions in our social media and check out our  
**HEALTHY OX** menu and takeaway options!  
Call now for more info.

**1 FEBRUARY 2021 - 26 FEBRUARY 2021**



## TROPICANA CATERING SERVICES

Call Toll Free : **1 800 88 8128**

Email : [salesmarketing@tropicancorp.com.my](mailto:salesmarketing@tropicancorp.com.my)

Telephone : 03 7804 8888 ext 202

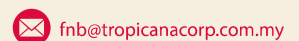


*Twenty 7*  
RESTAURANT

**THE PALM**  
COFFEE HOUSE

For reservations and more information please call :-

**+603 7804 8888 ext 306**





By  
**Sivakumar (Siva)**  
Senior Golf Instructor and  
PGA of Malaysia member

## Eyeline Putting

*How to minimise putting mistakes and reduce your scores*

The putting mirror (eyeline) is a great practice tool, especially to get your eyeline in the ideal position so that you can make more solid and consistent putts.

### Where your eyes should be on a putting mirror at address

Ideally, you would like your dominant eye over the top of the ball. If you're a right-handed golfer, the golf ball will be in line with your left eye; this will help to hit the ball on a slightly upwards motion, promoting better top-spin.

### How to putt like the best players

To putt like a pro, the two most important aspects of control are:

- Hitting your putts consistently in the centre of the putter face on the sweet spot.
- Maintaining an even tempo back and through, matching the distance you take the putter back with the distance you follow through.

Try this out and let us know if it improves your putting technique!

What else would you like to know about putting and other aspects of the game? Head on over to GSF Golf Smart at the Tropicana Driving Range and book a coaching session with experienced trainers!



The length of your takeaway and follow through should be roughly the same



Correct position for dominant right eye



Ideal hand position for putting

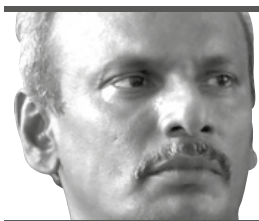
Brought to you by:



Email: [academy@gsfgolf.com](mailto:academy@gsfgolf.com)

Mobile: 012-800 2660

## Order Of Merit: What & Why



By V. Ravindran

Golf has been played over two centuries in Malaysia and the governing body, the Malaysian Golf Association, has existed since 1929. Much later in the 1970s, the Professional Golf Association of Malaysia (PGAM) was formed. Then SportExcel was set up in 1980, followed by the Malaysian Ladies Golf Association (MALGA) in 1983.

Though Orders of Merit (OOM) have been in existence for a long time in major golfing countries, it took some time for one to be introduced here in Malaysia.

So, what exactly is an Order of Merit and how did it start in golf and other sports?

The Order of Merit (or *Ordre du Mérite* in French) is a dynastic order recognising distinguished service in the armed forces, science, art, literature, or for the promotion of culture.

Established in 1902 by King Edward VII, admission into the order remains the personal gift of its sovereign – currently Edward VII's great-granddaughter Queen Elizabeth II – and is restricted to a maximum of 24 living recipients from the monarch's realm, plus a limited number of honorary members.

While all members are awarded the right to use the post-nominal letters OM and a medallion for life, the Order of Merit's precedence amongst other honours differs between realms.

The first mention of a possible Order of Merit was made following the Battle of Trafalgar in 1805, in correspondence between the First Lord of the Admiralty Lord Barham and William Pitt, though nothing came off the idea.

Later, it was suggested by Queen Victoria, her courtiers and politicians alike, that a new order, based on the Prussian order *Pour le Mérite*, would make up for the insufficient recognition offered by the established honours system for achievement outside of public service – in fields such as art, music, literature, industry and science.

In golf, the OOM is used to rank players for the year on a month-to-month basis based on points collected from respective



sanctioned tournaments. It has nothing to do with prize money earned. One can be a highest money earner but when it comes to the OOM, he or she might not be on the top.

In the past, and to the best of my knowledge, there has been only one OOM by the PGAM before it got suspended in 2009. MGA only had a ranking which was managed for the members of the national team to be selected for national assignments.

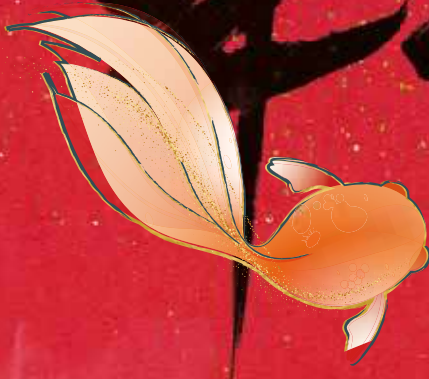
In 2009, we had two rankings – one for members of the national team and another for those who qualified for national trials and made the final round cuts, and updated after every MGA-

sanctioned events, including some junior events. Both were used to determine the selection of players for future MGA tournaments.

Since 2012 the PGM Tour has had its OOM for all professionals playing on their tour. The OOM is a good system of 'checks and balances' to select local players for events such as the Maybank Malaysian Open and CIMB Classic, to name a few. Essentially, a consistent performer would be selected over someone who ends up "winner of the day" at a qualifying round.

*Originally published in Golf Digest, written by V. Ravindran, Deputy General Manager of Tropicana Golf & Country Resort*

# 年年有金



砂煲永洲  
腊味(鸭)饭  
Hong Kong Style  
Claypot Cured  
Meat/Duck Rice

虾球炒  
萝卜糕  
Stir Fried  
Radish Cake  
with Prawn



鲍鱼珍珠  
荷叶饭  
Steamed Glutinous Rice  
with Mini Abalone  
in Lotus Leaf



麒麟蒸  
龙虎斑  
Steamed  
Tiger Grouper in  
Cantonese  
Style

图片展示只供示范用途而已。Pictures shown are for illustration purpose only.

## Christmas Cheer

The year 2020 journeyed to a close in a wonderful way at TGCR with Christmas being celebrated in high spirits. Despite a challenging 2020, the club has much to be grateful for, especially the unwavering support from members and staff alike.

The Christmas celebrations at the club were further enhanced by some special guests from the “North Pole” – Santa and Santarina, bringing much excitement and Christmas cheer as patrons enjoyed a merry evening of good food in the company of loved ones.

Let us all be thankful for life’s blessings, and may 2021 shower us all with peace, positivity, and prosperity.

Happy New Year!



## Covid-19 Advisory: The New Norm

In the interest of ensuring everyone's health and wellbeing at TGCR, the Management has implemented new SOPs that will need to be strictly adhered to at all times. (Please note that sports facilities are open with limitations, while Sauna, Jacuzzi and Japanese Bath are still closed.)

The new norms of golf have been adopted, as per the Malaysian Golf Association (MGA) guidelines for golf clubs to primarily safeguard the health of golfers, employees and guests. The TGCR Management urges all golfers to strictly comply with these directives, issued by the Ministry of Health.

### TGCR OPERATIONAL MEASURES

- Masks must be worn at all times on the premises of TGCR, except for golfing, sports and dining activities.
- Temperature screenings, scanning of QR Codes such as Tropicana, SELangkah and MySejahtera are compulsory upon entry at the Resort.
- Ensure hygiene at all times. Wash your hands regularly with soap and use hand sanitizers, which have been placed at all entry checkpoints, buggies and outlets.
- Maintain social distancing of at least 2 metres apart. Avoid close contact with everyone.
- Entry to changing rooms and 'surau' will be controlled; only limited number of members allowed at any one time.
- Cash transactions are discouraged; payments made via Membership or Credit/Debit Cards are preferred.

### MGA GUIDELINES FOR GOLF CLUBS

(effective January 6, 2021)

#### Pre-Game

- Golfers with any colds, coughs or any symptoms of Covid-19 shall be prohibited from entering the golf club.
- Bookings shall be made in advance.
- Twin-sharing buggy is permitted provided the buggy is fitted with a Plastic Screen Separator effective February 1, 2021. However, usage of single buggy is encouraged.
- Golf competitions may resume provided there is no prizegiving and gathering, and restricted to a maximum of 100 players except for golf clubs situated in RED ZONES. Any other private competitions held at golf clubs shall require prior sanction from MGA.



- Only accept online payment or bank transfer. Registration counter shall not accept any payment at the counter.
- One golfer to register for each flight.
- Each golfer shall complete and submit a Health/Travel Declaration Form prior to registration.

#### During Game

- Social distancing to be observed on tee grounds, greens and throughout the rounds.
- Remove all touchable surfaces (bunker rakes, water coolers, sand bags, ball washers, etc).
- Leave the flagstick in but cover the hole with a plate with hole in the middle for the flagstick so it is at least 1/2" below the cup. As per The R&A Guidelines, no modification of definition of hole.
- Golfers can use his/her feet or clubs to smooth the bunker area as recommended by The R&A.
- Tee time intervals to be increased (recommended 10 minutes interval).
- Golfers should only pick their respective golf ball up.
- Do not shake hands before and after the game.

#### After The Game

- Do not submit physical golf scorecards; take a picture and send the scorecards via WhatsApp or email.
- Separate entry and exit to the Clubhouse to maintain social distancing.

#### Other Important Notes

- Buggies must be sanitised before and after every use.
- Caddies shall wear masks and gloves at all times.
- No rental of sets, shoes, etc.
- Social distancing shall be strictly complied with at driving range.
- All touchable surfaces, carts, equipment, bathrooms, etc, are sanitised multiple times a day by club staff.

\* The complete and updated list of MGA guidelines for golf clubs can be found at: <https://mgaonline.com.my/wp-content/uploads/2021/01/Covid-19-guidelines-for-Golf-operations-updated-4-Jan-2021.pdf>

# GOLFING RATES

## GUESTS & VISITORS

<b>9 HOLES</b> MONDAY - THURSDAY	TWIN SHARING RM <b>156.00</b>	SINGLE RM <b>209.00</b>
<b>18 HOLES</b> MONDAY - THURSDAY	TWIN SHARING RM <b>280.00</b>	SINGLE RM <b>379.65</b>
<b>18 HOLES</b> FRIDAY ONLY	TWIN SHARING RM <b>350.00</b>	SINGLE RM <b>449.65</b>
<b>18 HOLES</b> SATURDAY AM/PM SUNDAY AM ONLY PUBLIC HOLIDAYS	TWIN SHARING RM <b>613.75</b>	SINGLE RM <b>713.40</b>
<b>18 HOLES</b> SUNDAY PM ONLY	TWIN SHARING RM <b>400.00</b>	SINGLE RM <b>499.65</b>

### TERMS & CONDITIONS

1. All rates are inclusive of buggy and caddy depending on twin sharing or single basis. 2. All golfers **MUST** have a **valid handicap**. 3. This package is applicable from **9 December 2020** onwards. 4. Rain cheque for guests and visitors will NOT be issued should there be a stop play or abandon play. 5. Please book **7 days** in advance.

Call **Golf Registration Counter** at **03 7804 1531**.

# COVID-19:

## OPERATIONAL & PREVENTIVE MEASURES

In order to ensure the health and well-being of all club members and staff, TGCR has new operational and preventive measures in place.

*Compulsory temperature screening upon entry at TGCR.*



*Compulsory hand-sanitizing upon entry at TGCR; hand-sanitizers are made available at all outlets and checkpoints.*

*Compulsory wearing of masks at all times at TGCR.*



*All TGCR facilities and common areas, including Golf Changing Rooms, are cleaned and disinfected regularly on a daily basis.*



*All furniture at TGCR thoroughly cleaned and sanitized frequently.*

*Golf bags are sanitized before being placed into buggies.*

*Buggies are washed and sanitized after every round.*

*Food delivery boxes are sanitized after each delivery.*

*Compulsory for all kitchen staff to wear masks and gloves.*



*Compulsory for food delivery riders to wear masks and gloves.*

## Fitting Feast on New Year's Eve

After a year riddled with challenges, it was only fitting to draw the curtain on it by welcoming 2021 with a wonderful feast. The evening of December 31, 2020 saw members and guests – all dressed for the merry occasion – enjoying a sophisticated 5-course dinner at The Palm Coffee House in the gratifying company of family and friends.

Enhancing the celebratory mood even further was the wonderful live music by gifted soul singer and guitarist Kamarudin Jaffar, whose engaging solo performance perfectly complemented the evening.



**TROPICANA**  
LIFE & LIVING BEHAVIOR

**THE PALM**  
COFFEE HOUSE

# New Year's Eve DINNER

# 2021

**AMUSE BOUCHE**  
greek feta puff - arabiatta sauce

**APPETIZER**  
crispy oat shrimps - mango papaya sam tam

**SOUP**  
wild mushroom - wonton ravioli - truffle oil

**CHOICE OF MAIN COURSE**  
**MISO BAKED SNAPPER**  
scallop mousse - young ginger pickles - vegetables - tomato confit - sweet basil lemon emulsion  
or  
**GRAIN FED BEEF MEDALLION**  
garlic basil coconut crumble - fondant potato - vegetable fettucine - truffle aioli

**DESSERT**  
vanilla choco ice cream - red velvet macarons

**COFFEE OR TEA**

— RM122 nett per person —

For Reservations  
**03 7804 1919**

[www.tropicana.com](http://www.tropicana.com) [fb@tropicana.com](https://www.facebook.com/tropicana.com) [tropicana.com](https://www.instagram.com/tropicana.com)



# Kindyland

## Where learning is FUN!

### Tropicana Gardens Mall Outlet Now Open

#### REGISTER NOW for early bird discount

We prepare children for further studies in all types of elementary schools. Our immersive tri-lingual syllabus focuses on developing your child mentally, physically, socially and emotionally throughout their early years, forming the foundation for their future



Award Winning Pre-school and Daycare  
BabyTalk & MamaPapa Readers Choice 2019 & 2020

Tropicana Golf & Country Resort | Tropicana Gardens Mall

+6018-870 1111



[www.kindyland.com.my](http://www.kindyland.com.my)

# BABOR

ASK FOR  
*more.*



*Beauty is basically Confidence.  
Make over yourself this new year  
at Eco Salon.*

*Don't miss Eco Salon's promotion get  
2 beauty sessions for the price of 1.*

*Drop by the shop at Tropicana Golf &  
Country Resort next to the Tropicana Clinic.*



*Opening hours **10.30am to 7.00pm,**  
appointments **11.00am** onwards.*



**Book an appointment today:**

**03-7804 9316**



## Lux Tux @ De Manshop

If you're looking to custom-tailor a suit, De Manshop – located at the Golf Wing – may just be the right fit for you.

Choose from an array of luxury fabrics, colours and textures, and get ready to be custom-fit to perfection!

**Get in touch with KK Wong at +6012-3318063  
to set an appointment.**

**Opening hours: 11am – 7pm (Daily)**

# QINGHEGU *everyday* LUNCH BOX

All Menus are **RM18 ONLY**

ONLY FOR **TAKE-AWAY** AVAILABLE  
**CASH ONLY**

11:30AM - 16:00PM

FREE WATER PROVIDE!



**MAIN DISH + RICE + 5 SIDE DISHES**



불고기덮밥 (Beef Bulgogi Set)



오징어덮밥 (Spicy Stir-fried Squid Set)



주먹밥 셋트 (Beef Rice ball Set)



닭볶음탕 (Spicy Chicken Stew Set)

This menu sold in limited quantities only at lunchtime every day until it is sold out. / Please pre-order for if you need above quantities of daily limit.

# JANUARY

## PROMOTION



CHICKEN YAKITORI, LEEK, GRILLED PINEAPPLE,  
BELL PEPPER, STEAM RICE – RM 25



PAN SEARED SALMON, STIR FRIED SOBA WITH VEGETABLES,  
SPRING ONION, SMOKED BLACK PEPPER SAUCE – RM 35



NASI BRIYANI WARNA – WARNI  
RENDANG TULANG RUSUK LEMBU – RM 38

NASI BRIYANI BENGALI  
KARI KAKI KAMBING – RM 59



Member's prices are stated\*

# FEBRUARY

PROMOTION



**MUSHROOM RISOTTO, FRIED PRAWN, TRUFFLE OIL – RM 32**



**BRAISED HONG KONG NOODLE YEE MEE – RM 34**



**SQUID INK PASTA SPICY POMODORO SAUCE, GRILLED CALAMARI, FRESH BASIL – RM 36**



**CHICKEN HAM FRIED RICE WITH BUTTER LOBSTER – RM 59**

Member's prices are stated\*



## FUNCTION AREAS

### Ground Floor

- 3 Greens I
- 23 Greens III
- 25 Poolside Terrace

### 1st Floor

- 5 Greens II
- 8 Ballroom I
- 9 Ballroom II
- 10 Ballroom III

## OUTLETS

- 1 Pro Shop
- 2 De Manshop
- 4 Twenty 7 Restaurant
- 6 Spring Garden Chinese Restaurant
- 7 The Palm Coffee House
- 11 Gin Shui Tei Japanese Restaurant
- 12 Kindyland Tropicana
- 14 The Green House Florist
- 15 Alam Convenient Store
- 16 Tropicana Clinic
- 17 Eco Hair Salon
- 18 Havana & Glamour
- 20 QingHeGu Korean Traditional Restaurant
- 21 Jojo's Italian Restaurant
- 22 Thai Odyssey Spa & Massage
- 24 Bowling Alley



## GIN SHUI TEI JAPANESE RESTAURANT

GF, Main Wing  
**Tel:** 03 7886 9168  
**Open Daily:** 12pm - 3pm  
 6.30pm - 10.30pm



## HAVANA & GLAMOUR

LG, Palms Wing  
**Tel:** 03 7804 8888 ext 514  
**Mon - Thurs:** 4pm - 1am  
**Fri - Sat:** 4pm - 2am  
**Closed on Sunday**



## JOJO'S ITALIAN RESTAURANT

GF, Palms Wing  
**Tel:** 03 7805 3935  
**Mon - Thurs:** 11am - 3pm  
 6pm - 11pm  
**Fri - Sun:** 11am - 1am



## QINGHEGU KOREAN TRADITIONAL RESTAURANT

GF, Palms Wing  
**Tel:** 03 7802 8917  
**Weekdays:** 11.30am - 3pm  
 6pm - 10pm  
**Weekends & PH:** 11.30am - 10pm



## POOLSIDE CAFE

LG, Sports Wing  
**Tel:** 03 7804 8888 ext 327  
**Closed on Mondays**  
**Tues - Fri:** 4pm - 7pm  
**Sat, Sun & PH:** 8am - 7pm



## SPRING GARDEN CHINESE RESTAURANT

GF, Main Wing  
**Tel:** 03 7880 7226  
**Mon - Sat:** 11.30am - 2.30pm  
 6.30pm - 10.30pm  
**Sun & PH:** 10.30am - 2.30pm  
 6.30pm - 10.30pm



## THE PALM COFFEE HOUSE

GF, Main Wing  
**Tel:** 03 7804 8888 ext 306  
**Weekdays:** 11.30am - 3pm  
 6pm - 10.30pm  
**Weekends & PH:** 11am - 10.30pm



## TWENTY 7 RESTAURANT

GF, Golfers Lounge  
**Tel:** 03 7804 8888 ext 325  
**Open Daily:** 6.30am - 11pm



## ALAM GENERAL STORE

GF, Walkway  
**Tel:** 03 7804 3095  
**Open Daily:** 10.45am - 9pm



## DE MAN SHOP

GF, Golf Wing  
**Tel:** 03 7880 4063  
 012 331 8063  
**(Call for appointment)**  
**Open Daily:** 11am - 7pm



## DRIVING RANGE WEST COURSE

**Tel:** 03 7880 6164  
**Mon:** 2pm - 11pm  
**Tues - Sun:** 7am - 11pm



## ECO SALON

GF, Walkway  
**Tel:** 03 7804 9316  
**Closed on Mondays & PH**  
**Tues - Sat:** 10.30am - 7.30pm  
**Sunday:** 10.30am - 6pm



## KINDYLAND TROPICANA

LG, Main Wing  
**Tel:** 03 7804 8888 ext 318  
 017 314 6754  
**Closed on weekends & PH**  
**Mon - Fri:** 8am - 3pm



## THE GREEN HOUSE FLORIST

GF, Walkway  
**Tel:** 03 7880 1388  
 012 370 7303  
**Closed on Sundays**  
**Mon - Fri:** 9am - 6pm  
**Sat:** 9am - 5pm



## THAI ODYSSEY

Sports Wing Entrance  
**Tel:** 03 7803 1233  
**Open Daily:** 10am - 10pm



## TROPICANA CLINIC

GF, Walkway  
**Tel:** 03 7805 5461 (Dr. Molly)  
**Closed Sundays & PH**  
**Mon - Fri:** 9am - 7pm  
**Sat:** 9am - 4.30pm



## MST GOLF PRO SHOP

GF, Golf Wing  
**Tel:** 03 7804 6348  
**Open Daily:** 7am - 7pm



## TROPICANA SALES GALLERY

GF, Walkway  
**Tel:** 1 800 88 8128  
**Closed on Sundays**  
**Mon - Fri:** 9.30am - 6pm  
**Sat:** 9.30am - 1pm

## Directory - Affiliated Clubs

**ENJOY!** Your TGCR membership has its privileges . . . not just at your home club but also at more than 38 affiliated and reciprocal golf and social clubs in 16 countries. Feel at home, even when you are away from home!

### NEW PROCEDURES

Members are to produce both their Introduction Letter and TGCR Membership Card upon arrival at the host club.

### APPLICATION PROCEDURES:

GOLFING MEMBERS please obtain your Introduction Letter and Reciprocal Card from the Golf Department at least seven (7) days in advance.

Phone: **+603 7804 8888 ext 200/204** or email to [golf@tropicangolf.com](mailto:golf@tropicangolf.com)



### AUSTRALIA

#### JOONDALUP COUNTRY CLUB

**Address:** Country Club Boulevard, Connolly WA 6027, Australia.

**Phone:** +61 8940 08811

**www.joondalupresort.com.au**



### CAMBODIA

#### PHOKEETHRA COUNTRY CLUB

**Address:** Dontro Village, Lavea Commune Puok District, Siem Reap, Cambodia.

**Phone:** +855 1288 2882

**www.phookeethragolf.com**



### CHINA

#### LONG ISLAND GOLF & COUNTRY CLUB

**Address:** Lotus Hill, Changan Country, Dongguan City, Guangdong Province 523846, China.

**Phone:** +86 7698 5313 888

**www.longislandgolfclub.com**



### INDONESIA

#### KLUB GOLF BOGOR RAYA

**Address:** Golf Estate Bogor Raya, Bogor 16710 West Java, Indonesia.

**Phone:** +62 251 8271 888

**www.bogorraya.co.id**

#### EMERALDA GOLF CLUB

**Address:** Tapos, Kecamatan Cimanggis, PO Box 38 Depok 16957, Indonesia.

**Phone:** +62 21 875 9019

**www.emeralda-golfclub.com**

#### BALI NATIONAL GOLF CLUB

**Address:** Kawasan Wisata, Lot S-5 Nusa Dua Bali, 80363 Indonesia.

**Phone:** +62 361 771 791

**www.balinational.com**

#### GADING RAYA PADANG GOLF & KLUB

**Address:** Jalan Bulevar Gading Golf, Gading Serpong, Tangerang 15826 Banten, Indonesia

**Phone:** +02 1546 7668

**www.gadingrayagolf.com**



### JAPAN

#### SUN ROYAL GOLF CLUB

**Address:** 1763-90 Kami-Kume, Kato City, Hyogo Prefecture 673-1414, Japan

**Phone:** +81-795-44-1060

**www.sunroyal.info**

#### RUSUTSU RESORT GOLF 72

**Address:** 13 Izumikawa, Rusutsu-Mura, Abuta-gun, Hokkaido 048-1711 Japan

**Phone:** +81-1272-5511

**www.rusutsu.co.jp**

#### SAPPORO GOLF CLUB

**Address:** 199 Tokiwa, Minami-ku Sapporo, 005-0863, Japan

**Phone:** +81-115-92-4944

**www.sapporo-country-club.com**

#### KOBE MUKONODAI GOLF COURSE

**Address:** Japan 651-1503, Kobe, Kita Ward, Dojocho, Ikuno 1176-16

**Phone:** +81 78-985-2361

**www.mukonodai.com**



### MALAYSIA

#### ROYAL SELANGOR YACHT CLUB

**Address:** Jalan Shahbandar, 42000 Port Klang, Selangor Darul Ehsan.

**Phone:** +603 3168 6964

**www.rsync.com.my**

#### SUTERA HARBOUR GOLF & COUNTRY CLUB BERHAD

**Address:** 1, Sutera Harbour Boulevard, Sutera Harbour 88100, Kota Kinabalu, Sabah.

**Phone:** +60 88 308 194

**www.suteraharbour.com**



### THAILAND

#### BANGKOK GOLF CLUB

**Address:** 99 Moo 2, Tiwanon Road, Bangkadi Sub District Muang, Pothumthani 12000 Bangkok, Thailand.

**Phone:** +662 501 2828

**www.bangkokgolfclub.com**

#### SPRINGFIELD ROYAL COUNTRY CLUB

**Address:** 208 Moo 2 Sampray, Cha-Am Petchaburi 76120, Thailand

**Phone:** +66 8925 59292

**www.springfieldresort.com**

#### MUANG KAEW GOLF COURSE CO LTD

**Address:** 52 Moo 8, KM7.7 Bangna-Trad Highway, Bangkaew, Bangplee Samutprakarn 10540 Thailand.

**Phone:** +66 2740 2694 ext 500

**www.muangkaewgolf.com**

#### ST ANDREWS 2000 CO LTD

**Address:** 9/36 Moo 7 Samnakhon Banchang, Rayong 21130 Thailand.

**Phone:** +66 3803 06602

**www.standrews2000golf.com**



## AUSTRALIA

### SANCTUARY LAKE CLUB

**Address:** Greg Norman Drive, Sanctuary Lakes, VIC 3030 Australia.  
**Phone:** +03 9395 2888  
[www.sanctuarylakesclub.com.au](http://www.sanctuarylakesclub.com.au)

### SANDHURST CLUB

**Address:** 75 Sandhurst BLVD, Sandhurst VIC 9877,  
 Melways Ref 128 D7, Australia  
**Phone:** +03 8787 7011  
[www.sandhurst.com](http://www.sandhurst.com)

### THE VINES GOLF & COUNTRY CLUB

**Address:** Verdelho DR, The Vines WA 6069, Australia.  
**Phone:** +61 8 9291 0707  
[www.vines.com.au](http://www.vines.com.au)



## BANGLADESH

### KURMITOLA GOLF CLUB

**Address:** Shaheed Sharani, Near Post Office, Dhaka Cantonment,  
 Dhaka 1206, Bangladesh.  
**Phone:** +880 8898 3510 / +880 8898 35123  
[www.kgc-bd.com](http://www.kgc-bd.com)



## BRUNEI

### ROYAL BRUNEI GOLF COUNTRY CLUB

**Address:** Jerudong, BG3122, Negara Brunei Darus Salam  
**Phone:** 62-2518257500  
[www.rbagc.com.bn](http://www.rbagc.com.bn)



## CHINA

### MISSION HILLS GOLF CLUB

**Address:** 1, Mission Hills Road, Shenzhen, Guangdong Province  
 518110 China.  
**Phone:** +86 7552 8020 8888  
[www.missionhillschina.com](http://www.missionhillschina.com)

### TIANJIN WARNER INTERNATIONAL GOLF CLUB

**Address:** 1, Nanhai Road Tianjin Economic Development Area,  
 Tianjin, China 300457.  
**Phone:** +86 2225 3260 09  
[www.warnergolfclub.com](http://www.warnergolfclub.com)

### TIANMA GOLF & COUNTRY CLUB

**Address:** 3958, Zhao Kun Road, Song Jiang District,  
 Shanghai 201603, China.  
**Phone:** +86 21576 65079  
[www.tianma.cc](http://www.tianma.cc)

### TIANJIN YANGLIUQING GOLF CLUB

**Address:** Yijing Road, Yangliuqing, Xiqing District,  
 Tianjin 300380, China.  
**Phone:** +86 22279 22792  
[www.ylqgolf.com](http://www.ylqgolf.com)



## INDIA

### THE DELHI GOLF CLUB

**Address:** Dr. Zakir Hussain Road, New Delhi - 110 003  
**Phone:** +91 2430 7100  
[www.delhigolfclub.org](http://www.delhigolfclub.org)



## JAPAN

### NARUMI COUNTRY CLUB

**Address:** Yokobuki 51, Narumi, Midori-ku Nagoya-shi, Aichi 4580801,  
 Japan.  
**Phone:** +05 2876 1532  
[www.narumicc.co.jp](http://www.narumicc.co.jp)



## INDONESIA

### GUNUNG GEULIS COUNTRY CLUB

**Address:** Jl. Pasir Angin Gadog Sukaraja Bogor, West Java, Indonesia.  
**Phone:** +62 2518 257 500  
[www.gununggeulis.com](http://www.gununggeulis.com)  
*\*Complimentary on green fees (weekdays only)*

### TERING BAY GOLF & COUNTRY CLUB

**Address:** Jalan Hang Lekiu KM.4, Nongsa, Batam, Indonesia.  
**Phone:** +62 7787 61818  
[www.teringbay.com.sg](http://www.teringbay.com.sg)

### TAMAN DAYU GOLF CLUB & RESORT

**Address:** Jl. Raya Surabaya-Malang KM.48 Pandaan,  
 Bulukandang, Prigen, Pasuruan Jawa Timur 67157, Indonesia.  
**Phone:** +62 3436 741234  
[www.tamandayu.com](http://www.tamandayu.com)

### PALM SPRINGS GOLF & BEACH RESORT

**Address:** Jalan Hang Lekiu, Nongsa Batam, Indonesia.  
**Phone:** +62 7787 61222  
[www.palmsprings.com.sg](http://www.palmsprings.com.sg)



## MALAYSIA

### SAMARAHAN COUNTRY CLUB

**Address:** Lot 4954, Block 26, Muara Tuang Land District,  
 Kuching, Kota Samarahan, Expressway 94300 Kota Samarahan,  
 Sarawak.  
**Phone:** +6013 816 1876  
[www.samarahanc.com](http://www.samarahanc.com)

### LABUAN INTERNATIONAL GOLF CLUB

**Address:** Jalan Sungai Pagar, 87000 Wilayah Persekutuan Labuan.  
**Phone:** +60 8746 8468  
[www.ligc.com.my](http://www.ligc.com.my)

### SABAH GOLF & COUNTRY CLUB

**Address:** Reservoir Road, Jalan Kolam, Bukit Padang,  
 88300 Kota Kinabalu, Sabah  
**Phone:** +60 8824 7533  
[www.sgccsabah.com](http://www.sgccsabah.com)



## SINGAPORE

### THE SINGAPORE ISLAND COUNTRY CLUB

**Address:** 240 Sime Road, 288303 Singapore  
**Phone:** +65 6431 8371 / 372  
[www.sicc.org.sg](http://www.sicc.org.sg)

### ORCHID COUNTRY CLUB

**Address:** 1, Orchid Club Road 769162 Singapore.  
**Phone:** +65 6755 9811  
[www.orchidclub.com](http://www.orchidclub.com)



## VIETNAM

### HERON LAKE GOLF COURSE & RESORT

**Address:** Dinh Am, Khai Quang, Vinh Yen, Vinh Phuc Province,  
 Vietnam  
**Phone:** +84 2113 8475 94  
[www.heronlakegolf.vn](http://www.heronlakegolf.vn)

### SONG BE GOLF RESORT

**Address:** 77 Binh Duong Boulevard, Lai Thieu Ward, Thuan An  
 Town, Binh Duaong Province, Vietnam  
**Phone:** +84 0274 3756 660  
[www.songbegolf.com.vn](http://www.songbegolf.com.vn)



**DALIA RESIDENCES**  
2-Sty Semi Detached  
Land Area : 45' x 80'

2-Sty Zero-Lot Bungalow  
Land Area : 56' X 85'

2-Sty Bungalow  
Land Area : Varies

Built-up : 3,976 sqft - 4,803 sqft  
Price : From RM 1,600,000\*



**ELEMEN RESIDENCES**  
2-Sty Superlink  
Land Area : 26' x 80'  
Built-up : 3,013 sqft - 3,172 sqft  
Price : From RM 950,000\*



**EDELWEISS SOFO & SERVICED RESIDENCES**  
SOFO  
Built-up : 452 sqft - 858 sqft  
Price : From RM438,000\*

Serviced Residences  
Built-up : 556 sqft - 1,111 sqft  
Price : From RM850,000\*



**DIANTHUS SERVICED RESIDENCES**  
Built-up : 601 sqft - 1,406 sqft  
Price : From RM 650,000\*



**TRIANA SHOP OFFICES**  
2-Sty Intermediate Lot  
Land Area : 24' x 70'

2-Sty Mezzanine End Lot  
Land Area : 32' x 70'

2-Sty Mezzanine Corner Lot  
Land Area : 35' x 70'

3-Sty Corner Lot  
Land Area : 35' x 70'

Built-up : 3,360 sqft - 6,771 sqft  
Price : From RM 1,870,000\*



**AMAN 1 - URBAN HOMES**  
Built-up : 870 sqft & 1,000 sqft  
Price : From RM 450,000\*



**LAKEFIELD RESIDENCES**  
2-Sty Link Villas  
Land Area : 24' x 65'  
Built-up : From 2,361 sqft - 2,426 sqft  
Price : From RM 1,060,000\*

3-Sty Link Villas  
Land Area : 24' x 70'  
Built-up : From 3,264 sqft - 3,730 sqft  
Price : From RM 1,207,000\*



**RIDGEFIELD RESIDENCES**  
3 & 4-Sty Park Villas  
Land Area : 25' x 85' / 25' x 90'  
Built-up : From 1,994 sqft - 2,658 sqft  
Price : From RM 777,600\*

3-Sty Semi Detached  
Land Area : 40' x 80'  
Built-up : 3,931 sqft  
Price : From RM 1,781,000\*



**RESIDENCES (SOUTH)**  
Built-up : 500 sqft & 700 sqft  
Price : From RM 377,000\*



**SHOPPES (SOUTH)**  
Avg Built-up : 1,665 sqft  
Price : From RM 1,000,000\*



**PAISLEY SERVICED RESIDENCES**  
Built-up : 601 sqft - 1,491 sqft  
Price : From RM 508,000\*



**TWINPINES SERVICED SUITES**  
Built-up : 379 sqft - 1,330 sqft  
Price : From RM 397,000\*



**CHERAS LINK VILLAS**  
3-Sty Link Villas  
Land Area : 20' x 75'  
Built-up : From 2,695 sqft - 2,885 sqft  
Price : From RM 1,024,000\*



**TROPICANA LANDMARK CONDOMINIUM**  
Built-up : 2,500 sqft  
Price : From RM 1,280,000\*

Terms & Conditions apply. Applicable to selected properties only\*



TROPICANA

10TEN

**10 PROPERTIES,  
10 NOT-TO-BE-MISSED DEALS!**

[www.tropicana.com.my/10Ten](http://www.tropicana.com.my/10Ten)

## 10 REASONS FOR YES



RM 1,000 LOW  
BOOKING FEE



FLEXI-BUY



ZERO  
DOWNPAYMENT



CASHBACK



MORTGAGE  
RELIEF

**10:90**  
SCHEME

10:90 SCHEME



EASY PAYMENT  
SCHEME



FREE MOT



MORATORIUM



DOUBLE REFERRAL  
REWARDS

Terms & Conditions apply. Applicable to selected properties only\*



Sheer  
Driving Pleasure



# TAKE JOY ON THE ROAD.

EXPERIENCE THE PASSION AT INGRESS AUTO.



**Ingress Auto**  
Passionately BMW

(Company No. 709466-X)

**Mutiara Damansara (Sales & Services)** - 2779, Jalan Damansara, Sungai Penchala, 60000 Kuala Lumpur. Tel: +6 03 7721 2288 Fax: +6 03 7721 2299

**Puchong (Sales & Service)** - No. 3, Lebuhr Puteri, Bandar Puteri, 47100 Puchong, Selangor. Tel : +6 03 8063 3222 Fax : +6 03 8063 3666

**Kepong (Body & Paint)** - No.17, Jalan Kuang Bulan, Taman Kepong, 52200 Kuala Lumpur. Tel: 03-6272 9199 Fax: 03-6272 3822

**MINI Bangsar** - 65, Jalan Maarof, Bangsar Baru, 59100 Kuala Lumpur. Tel: 03-2287 9988 Fax: 03-2287 9888

[info@ingressauto.com.my](mailto:info@ingressauto.com.my) [www.ingressauto.com.my](http://www.ingressauto.com.my)